

## People Hub Connections – SQL Server to People Hub (Linked Server)

### Overview

This guide defines the guiding principle to utilize when a system needs to connect from a SQL Server Database to People Hub. This technique should be utilized when you have an **existing** Linked Server connection to another SQL Server Database that has access to people information that is now to come from People Hub.

### What You Need to Know

The People Hub is located on a SQL Server Database. The guiding principle to access data from the People Hub is to utilize a **Web Service Consumer** to request People Information from this store. In situations where the time to convert an existing application to utilize the Web Service approach to get data will not allow to meet business deliverables the Linked Server approach can be utilized to get information efficiently.

### Additional Information

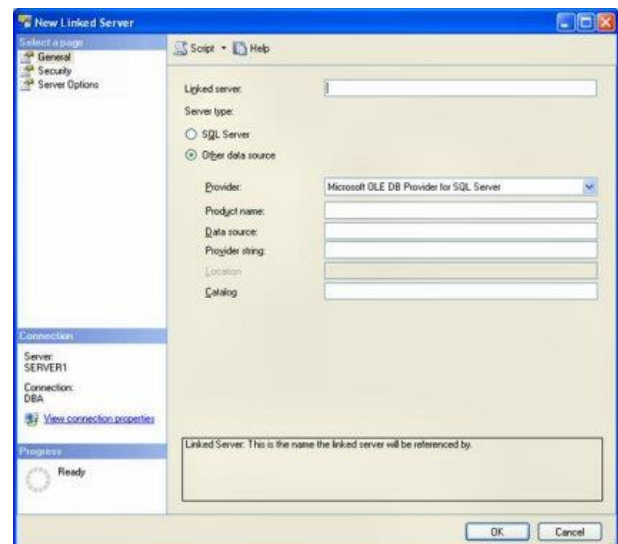
1. SQL Server Management Studio should be used to set up this connection
2. The Server name entered will be the exact server database name of the People Hub Server.
3. You can create multiple connections to the same linked server. The steps for this are outlined in the Frequently Asked Questions Section (FAQ)

### Define a Linked Server

#### How to Define a Linked Server

To create or list the available linked servers already defined you look under the "Server Objects" folder within SQL Server Management Studio (SSMS).

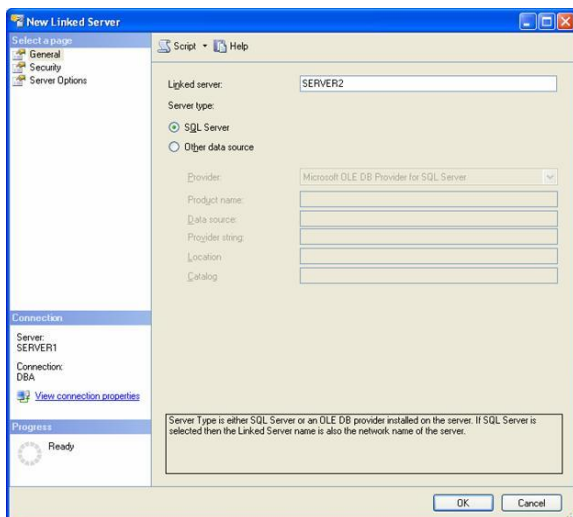
First expand the "Server Objects" folder, and then right click on the "Linked Servers" item. This would display the following window:



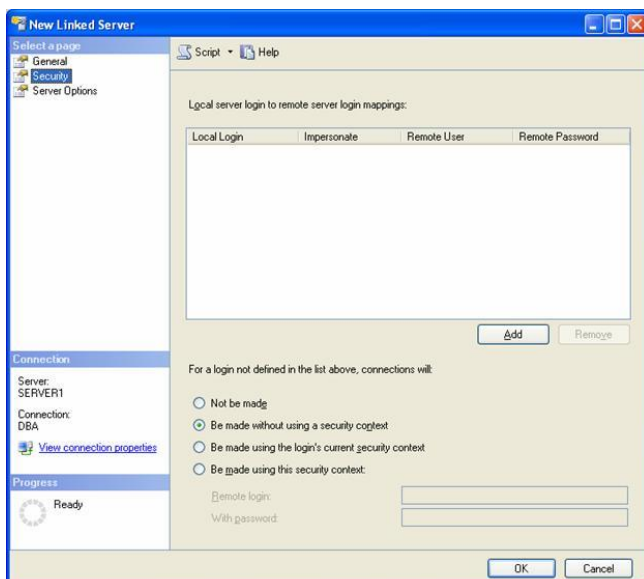
## People Hub Connections – SQL Server to People Hub (SQL Server)

On this window, name your new linked server and identify the type of data source your linked server will be. We will use “aw-dwtstadb-01.yu.yale.edu”, as a SQL Server data source. In order to do that we will need to identify the name of the linked server and then use the “Security” and “Server Options” pages to define how we would like to authenticate to the People Hub linked server and what options will be associated with my linked server. To begin defining the linked server we enter “aw-dwtstadb-01.yu.yale.edu” in the “Name” field and then click on the “SQL Server” radio button to identify that my new linked server is a SQL Server data source. The Linked Server name must be the server name of the PeopleHub.

When we do this your window looks like this



To define how clients would authenticate to “aw-dwtstadb-01.yu.yale.edu” I would click on the “Security” item in the upper left hand corner of this page, under the “Select a page” section. When I click on the “Security” item, the following page is displayed:



## People Hub Connections – SQL Server to People Hub (SQL Server)

### Map Local login to Remote Login

People Hub has a set of user logins/accounts that have been set up for each impacted system. In order for the linked server to utilize the correct login we must map the local login to the Remote User login. This is accomplished by selecting the **Security** Page on the New Linked Server Dialog.

First click on the add button and then add the local login account to the **Remote User**. The Remote user will be the name of the system account that was given to you by the security team to access people hub. Also add the password for this account into the **Remote Password** field.

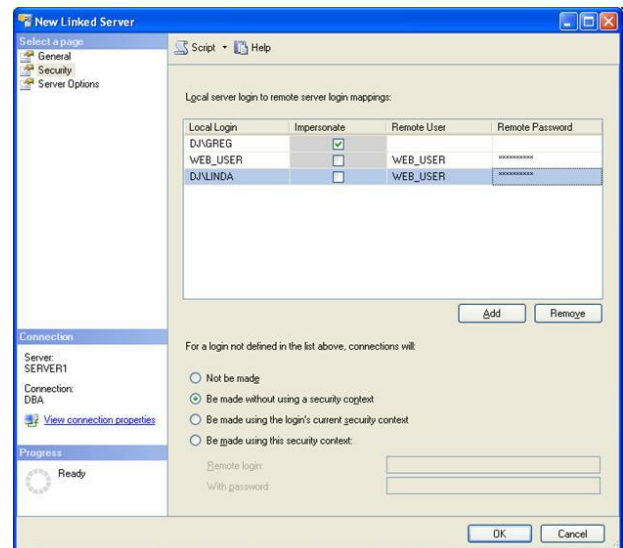
As an example, If Suzy Facilities (S1111) has filled out her Access Request form (☺) and it has been determined that she needs the **Controlled Extended** access. Then the following will need to be set up:

**Local Login:** YALE\S1111

**Remote User:**

yuph\_controlled\_extended\_fac

There may be use cases where an application (i.e. Web Based app) will pass the credentials of its users as a request to the database. Suzy Facilities (S1111) and Roger Facility (R2222) both utilize the Facilities Web App. However, Suzy has **Controlled Extended** access and Roger has **Controlled Basic** access. Naturally, one may request the need to have multiple linked servers set up to the people hub. When using the SQL Server Server Type, you are not allowed to use the same server name multiple times. In order to set up multiple connections to the same linked server you just have both Roger and Suzy mapped through security. Roger should be mapped to the **Remote User** yuph\_controlled\_basic\_fac and Suzy to yuph\_controlled\_extended\_fac



## People Hub Connections – SQL Server to People Hub (SQL Server)

---

### TSQL Examples for Using Linked Servers

Above I defined a linked server named “aw-dwtstadb-01.yu.yale.edu”. As stated earlier, in order to reference objects on “aw-dwtstadb-01.yu.yale.edu” I would need to use a four part naming convention. Below are some examples of how to referencing objects on aw-dwtstadb-01.yu.yale.edu.

Here is how you can retrieve information in the “YUPH\_PEOPLE\_GENERAL\_CUR\_RSET\_V” table in the “DV\_PeopleHub” databases stored on linked server “aw-dwtstadb-01.yu.yale.edu”:

```
SELECT * FROM aw-dwtstadb-01.yu.yale.edu. DV_PeopleHub.dbo.YUPH_PEOPLE_GENERAL_CUR_RSET_V
```

All you have to do here is put the linked server name followed by a period before the fully qualified table name.

## People Hub Connections – Talend to People Hub (JDBC)

### Overview

This section defines the guiding principle to utilize when a system needs to connect external systems with the People Hub. Utilizing Talend as the integration tool for system access with the People hub is the preferred approach. Ultimately, the guiding principle is to utilize Talend's **Web Service** components to connect to the **PeopleService** to extract information to the People Hub. This document however outlines the Talend **JDBC** approach for access. This technique should be utilized when there is a need for information from the People Hub and the People Hub Services that are needed does not cover the People Hub attributes that are needed by your system. It is still recommended that you reach out to the Service team to give your business requirements and attribute needs that are not available via the People Hub Access Request form so that the team can look into creating or augmenting existing services to meet your need.

### What You Need to Know

The People Hub is located on a SQL Server Database. The guiding principle to access data from the People Hub is to utilize a **Web Service Consumer** to request People Information from this store. In situations where the time to convert an existing application to utilize the Web Service approach to get data will not allow to meet business deliverables the Talend JDBC approach can be utilized to get information efficiently.

### Additional Information

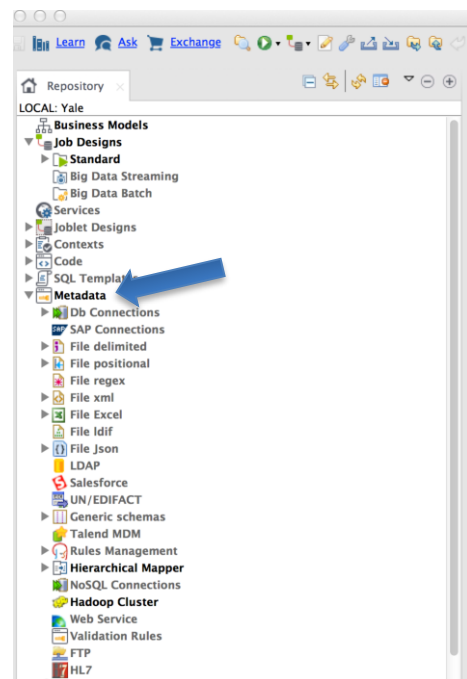
1. Talend Studio (v6.2x)
2. Login account and password for access to the PeopleHub

### Create Metadata Connection

First thing that must be set up in Talend Studio is a metadata connection to the People Hub Server. The metadata connection is located on the left hand side of your Talend Workspace in the Integration perspective.

Expand the Metadata node.

In order to establish a connection to People Hub on SQL Server, right click on the **Db Connections**. In the context menu click **Create connection**. This will open the Database Connection Wizard.



## People Hub Connections – Talend to People Hub (JDBC)

### Database Connection Wizard

The database connection wizard will walk you through setting up your connection to People Hub(SQL Server). First enter the name you want to define for your connection. In this example we have entered PeopleHub.

Once entered, click **Next**. Step 2/2 of the wizard dialog will display. This is where we enter the login credentials that were given for your system to access PeopleHub.

Enter your login id in the Login field (i.e awdwtstdb-01.yu.yale.edu).

Enter your password next in the password field. The password entry is masked by \* when you type.

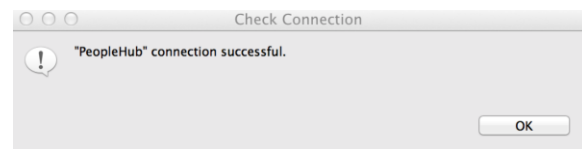
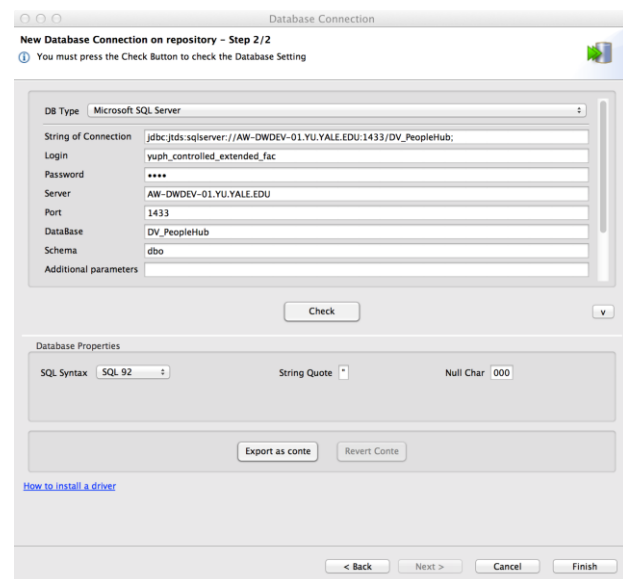
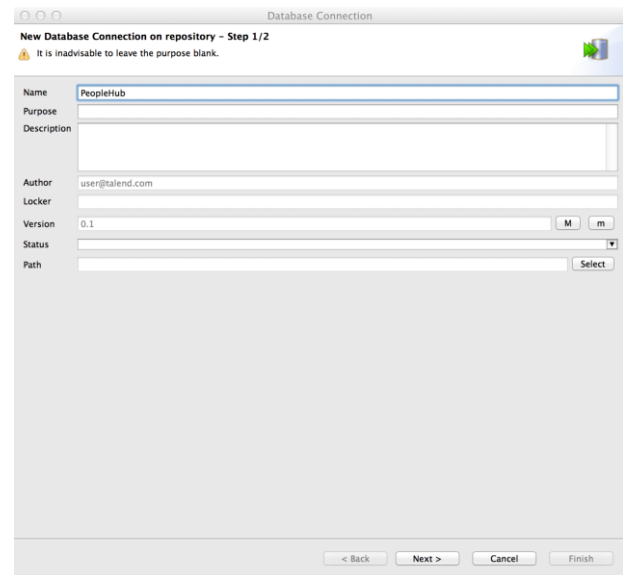
Next enter the port to PeopleHub, currently set as **1433**.

Next will be the DataBase for the People Hub:  
**DV\_PeopleHub**

Next, enter the Schema: **dbo**

You can check to see if the connection information you entered is valid by clicking on the Check Button. If all is well, you should see the Connection Successful Dialog. Click OK and then Click Finish to close the wizard and create the new connection.

In the Repository view on the left side the new connection will appear under the **Metadata-> Db Connections** node.



# People Hub Connections – Talend to People Hub (JDBC)

## Retrieve People Hub View Schemas from the PeopleHub DB Connection Metadata

### Create a Table schema metadata

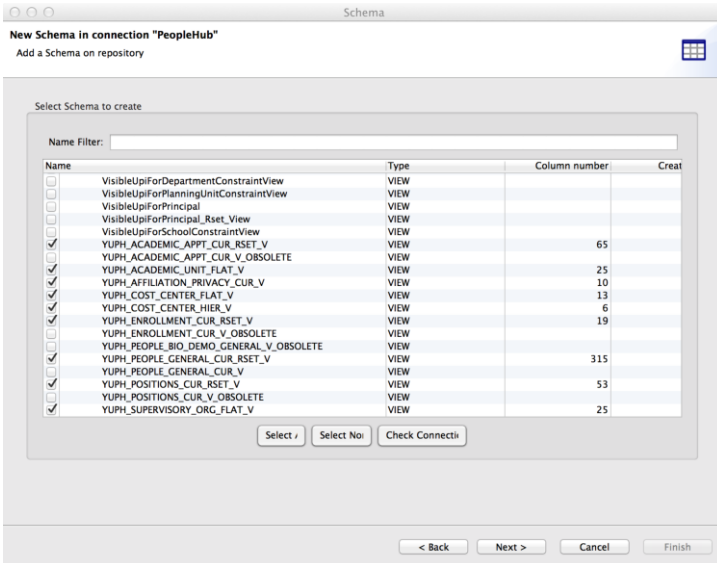
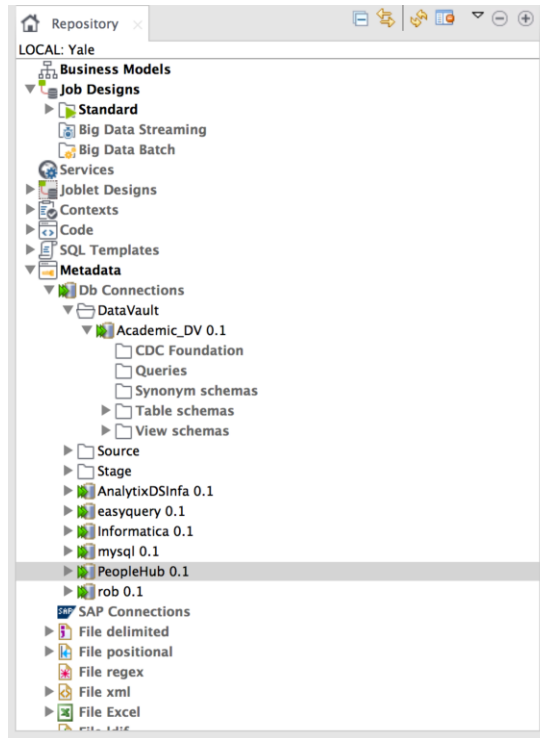
In the Repository on the left of the Talend Open Studio main screen:

Expand the Metadata > RemoteDBMS node.

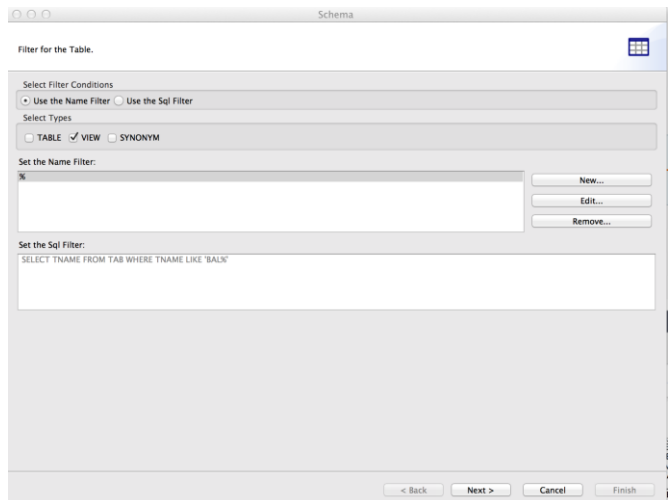
Right-click on PeopleHub.

In the menu, click Retrieve Schema to open the Schema wizard.

The Default selections for Select Types should be changed to check VIEW only. At this point we can just click Next in order to get the list of People Hub views that we would like to set up within Talend to use in our jobs (**see below**).



Once Selected click Next:



# People Hub Connections – Talend to People Hub (JDBC)

## Talend Imported Views Schema Wizard

You now see a list of the selected People Hub Views along with their associated schema definitions. You can modify the structure (i.e. Key, Db Type, Type, Nullable, etc) if needed. Once completed click Finish. This will bring you to the main Talend workspace with the Repository on the left side. In the Repository view you can select **Metadata->Db Connections->PeopleHub->View Schemas**

You will see the list of People Hub Views that can now be used in your Talend jobs.

